

OFFICE/FLEX

SUITE 246/248/250/252

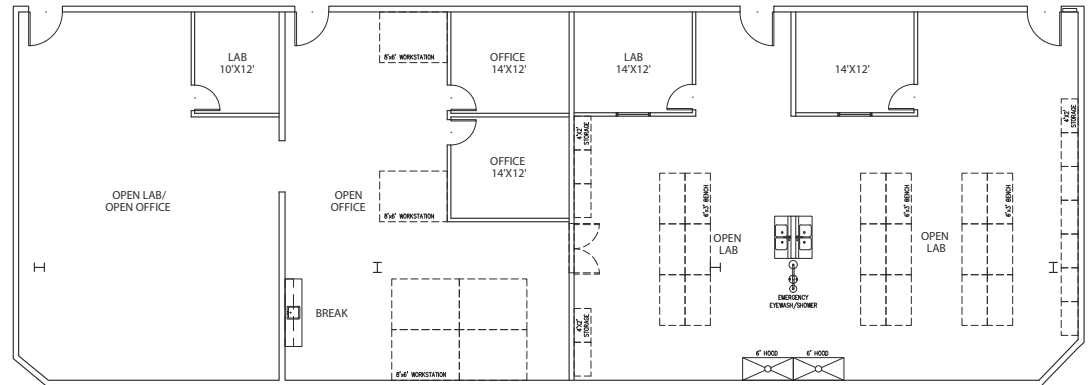
1933 Davis Street

SUITE SPECS

- 6,829 sq. ft.
- Newly constructed labs
- Two 6ft Chemical fume hoods
- Two lab sinks and safety shower
- Two drop ceiling lab rooms
- Scalable campus for growth companies
- Flexible lease terms
- 25 ft clear Height
- 305 Amps at 110/208v 3-phase

KEY

- ==== Unit walls (height varies)
- - - Imaginary line



GATE 510

GROW YOUR BUSINESS HERE

510 430-0133 | 1933 Davis Street | San Leandro, CA 94577 | GATE510.COM