

OFFICE/FLEX

SUITE 249

1933 Davis Street

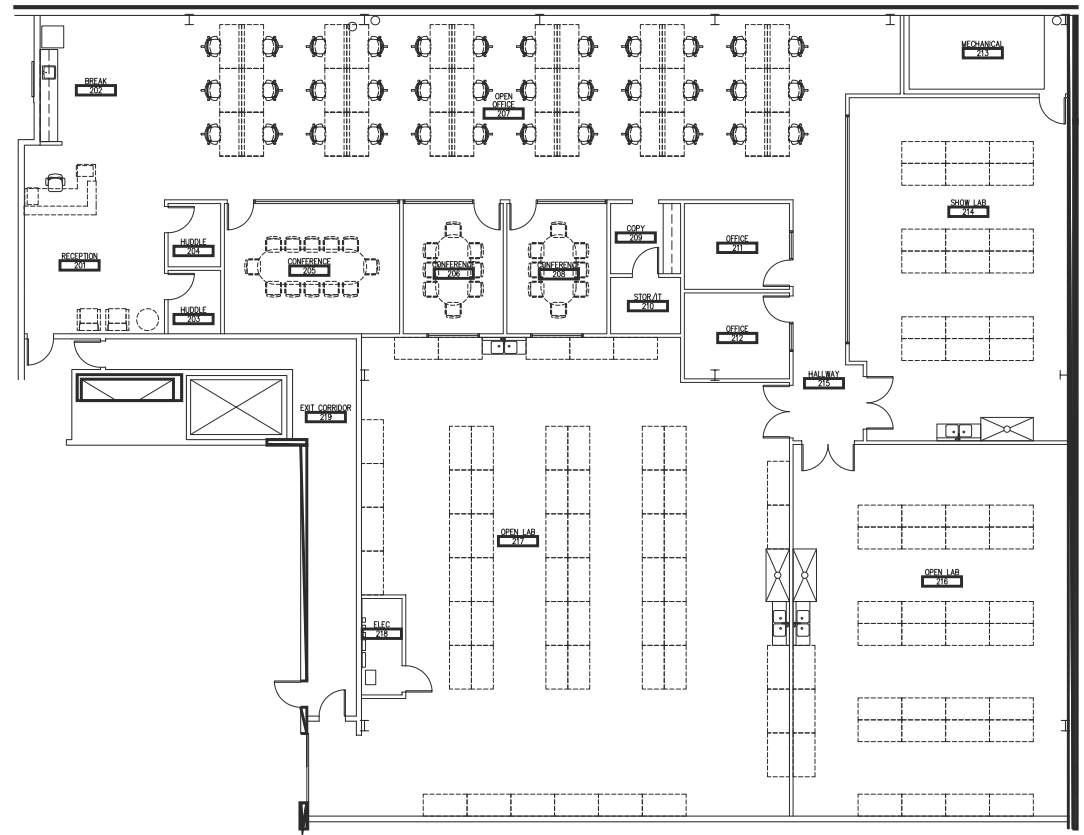
SUITE SPECS

- 14,712 sq. ft.
- Construction approaching completion
- Multiple office, huddle and conference rooms
- Fully built out breakarea
- Modern aesthetics with natural light
- Scalable campus for growth companies
- Three labs with individual HVAC and electrical drop downs
- 25 ft clear Height • roll up door access, with nearby freight elevators
- 400 AMps at 480v

KEY

—— Unit walls (height varies)

- - - Imaginary line



GATE 510

GROW YOUR BUSINESS HERE

510 430-0133 | 1933 Davis Street | San Leandro, CA 94577 | GATE510.COM